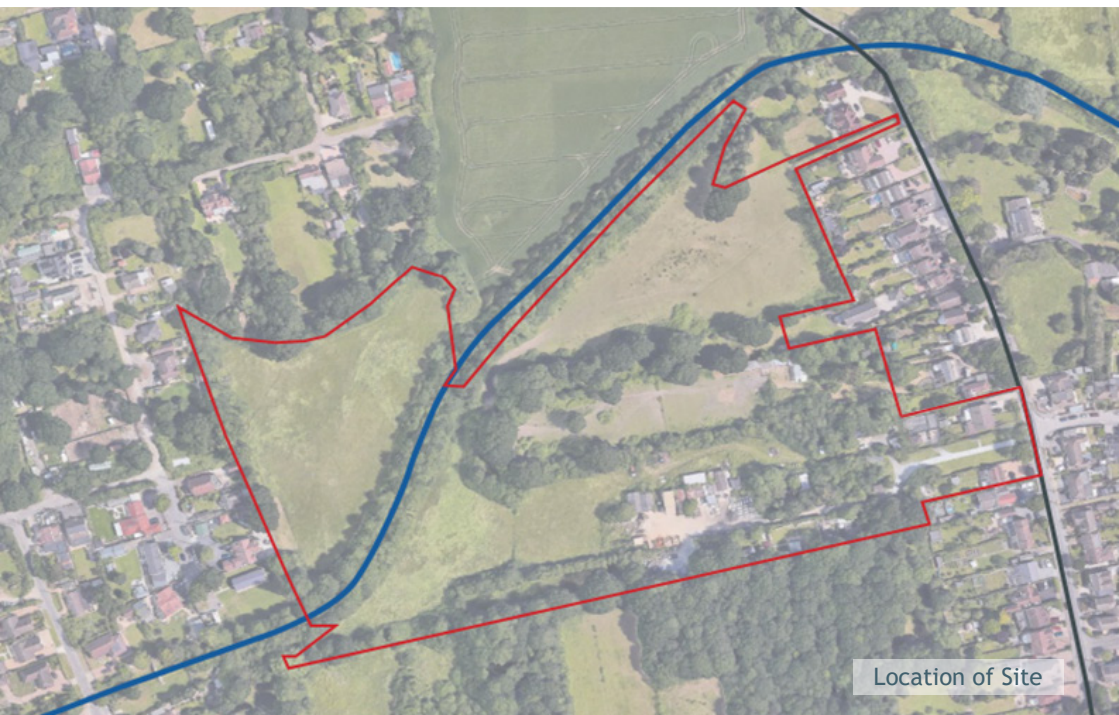


# LAND WEST OF CASTLEDON ROAD WICKFORD

## CONSULTATION INVITATION LEAFLET



MERROW WOOD



### NEW HOUSING DEVELOPMENT FOR WICKFORD

**We are seeking your views about our proposed new residential development in Wickford. The location is on Castleton Road on the West side of Wickford**

- proposals for the site will deliver around 99 new homes
- a mix of 1 bedroom maisonette's through to 4 bedroom detached homes
- 35% will be allocated for various tenures of affordable housing including affordable rent, shared ownership and discount market sale.
- Landscape led design incorporating large areas of new public open green space, river walkways and new public footpath connectivity between London Road and Castledon Road
- This site was historically allocated for development in the Basildon Plan its development will provide local infrastructure / biodiversity net gain / modern and sustainable homes / policy compliant parking standards and site access

## HAVE YOUR SAY - TELL US WHAT'S IMPORTANT TO YOU

Our plans are evolving, and we are seeking your feedback and ideas to help us shape and finalise our planning submission which we hope to submit later in the summer. We have had initial pre-application discussions with Basildon, and now want to hear from you.

We are holding a consultation event on the **11th of July at Our Lady of Good Counsel RC Church at 61 London Road in Wickford** between the hours of **3.30 and 7pm**. This will be an opportunity to inspect the plans, discuss the scheme with our team in person and give your valued feedback.

If you are not able to join us on the 11th an electronic copy of the presentation will be available from the 11th of July on our website [www.MerrowWood.com/Wickford](http://www.MerrowWood.com/Wickford) you will also find an electronic questionnaire to provide your feedback.



MERROW WOOD

contact us by email:

[Consultation@MerrowWood.com](mailto:Consultation@MerrowWood.com)